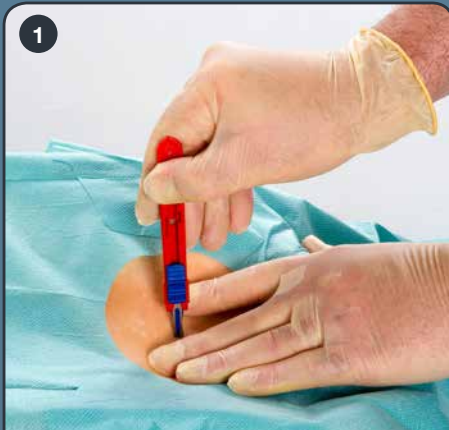
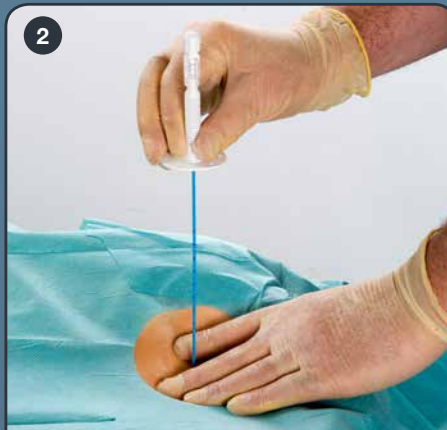


Guide to inserting the Rocket® BLUE™ Needle Drain

INSTRUCTIONS FOR USE - PREPARATION & DRAINAGE



- 1
- Select and prepare drainage site
 - Deeply infiltrate with local anaesthetic
 - Confirm presence of ascites
 - Apply skin traction prior to making skin nick
 - Insert blade vertically to create a 3-5mm wide 'skin-nick' into the skin and subcutaneous tissue



- 2
- Straighten the J curve with the sleeve
 - Insert and lock the needle set to the drain
 - REMOVE THE SLEEVE
 - Grip the drain by the fixation plate
 - Insert perpendicular to the insertion site, applying counter traction to the skin



- 3
- Confirm needle tip position by aspiration
 - Detach needle set from drain hub. DO NOT WITHDRAW NEEDLE
 - Support the needle with one hand



- 4
- Grip the drain at the insertion point and slide the drain over the needle into the abdomen
 - Do NOT withdraw the needle until drain is fully inserted



- 5
- Remove the needle when the drain is fully inserted and the fixation plate is at the skin surface
 - Support the fixation plate when removing the needle
 - Occlude the port on removal of the needle set to prevent leakage



- 6
- Attach a drainage bag connection set supplied using the rotary collar to secure the connection
 - Do NOT twist the connection set or drainage bag tubing
 - Apply 4 strips of tape crossways over the fixation plate to secure the drain
 - Suture if required