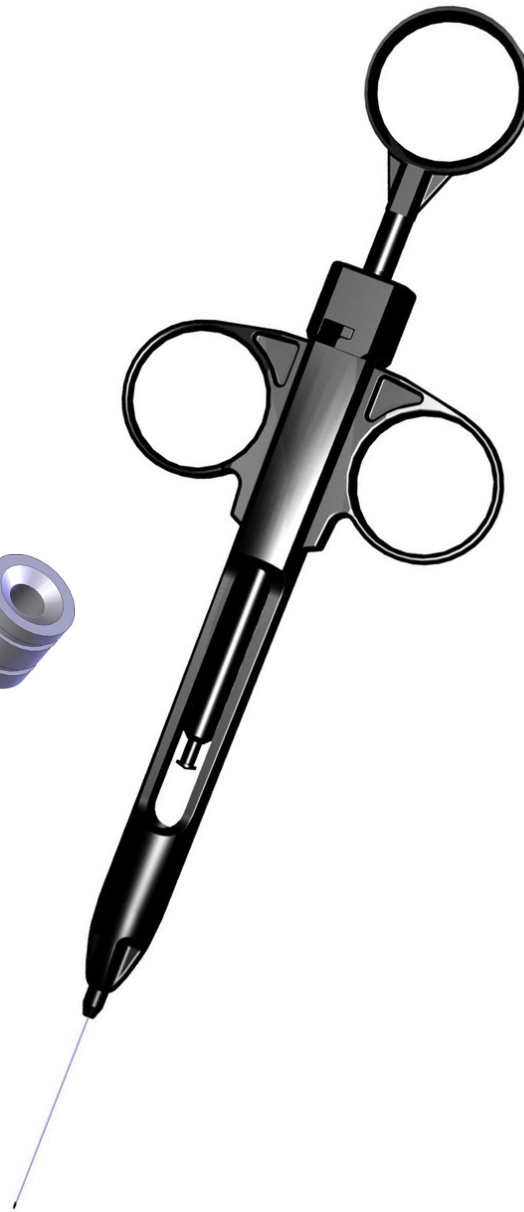
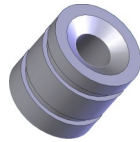


# Rocket® CERVINEEDLE® Cartridge Syringe

Colposcopy

- SIMPLE BREECH LOADING**, suitable for all standard 2.2ml glass vials. Rotate the breech cap, remove, then load vial and reinsert the breech plug. Locking the plug into position seals and pierces the vial ready for injection.
- COST EFFECTIVE, SINGLE** eliminates costly reprocessing concerns and reduces patient costs. Ideal for use in dermatology, colposcopy, dental practices and any department using local anaesthetic vials.
- RELIABLE ASPIRATION** when used with vials with hollow end plugs, the syringe allows full aspiration to ensure correct, safe placement.
- STANDARD DENTAL NEEDLE:** 26G x 35mm dental needle for reliable, controlled tissue injection.



The **Rocket® CERVINEEDLE®** Cartridge Syringe offers a simple, cost effective solution to the risks to staff and patients associated with reprocessing of autoclavable 'dental syringes'

The syringe can also be used with solid plug, non aspirating vials.

Description	Size	Code
<b>Rocket® CERVINEEDLE® Cartridge Syringe</b> for use with 2.2ml glass vials, solid or aspirating plug. Sterile, for single use, packed in cartons 10 units.	26G x 35mm Dental type	<b>R57870</b>