

Customer Information Bulletin

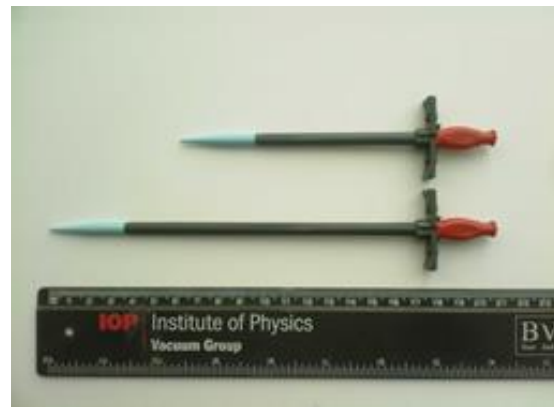
Rocket Medical® IPC Insertion Kits

Dear Customer,

Due to supply chain issues we are having to replace the current short Tearaway sheath dilator with a standard-length version for the foreseeable future.

Product Codes affected: R54400-16-MT and R54400-16-MINI.

You can see the length difference in the components below.



The short dilator dimensions are as follows

Dilator Length: 11cm

Tearaway Sheath Length: 7cm

The standard dilator dimensions

Dilator Length: 17cm

Tearaway Sheath Length: 13.5cm

Please be aware of this difference when inserting the IPC catheter.

The length of the tip of the dilator to the tearaway sheath remains the same distance.

If you have any questions, please contact the Customer Services Team for assistance:

T: +44 (0)191 419 6988 E: customerservices@rocketmedical.com

Customer Information Bulletins for all of our products can be found on our website: www.rocketmedical.com

TEMPLATE157 Rev1 22/FEB/2022